

# FlashAir Configuration Software installation.

## Download

Download the latest version of FlashAir Configuration Software.

- [FlashAir™ Configuration Software Download](#)

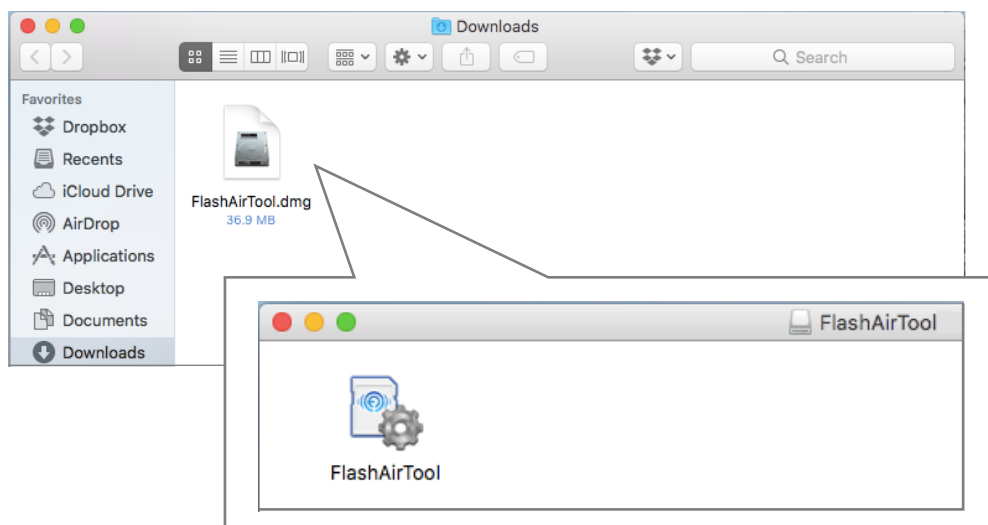
## Installation

- [Mac](#)
- [Windows](#)

### Installation For iOS device:

Install the latest version of FlashAir Configuration Software.

Double-click the icon of downloaded "FlashAir\_tool\_vXXX.dmg" (XXX: the version), to generate the FlashAir Tool App.



Drag and drop the App in any location (e.g. Application folder). The installation is done.

Insert your FlashAir into the SD card slot of Mac, then double-click the icon of "FlashAir Tool" to open it. Please see the help attached in the FlashAir Configuration Software for the usage.

## Installation For Windows device:

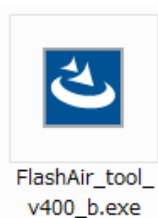
Install the latest version of FlashAir Configuration Software.

On the icon of downloaded "FlashAir\_tool\_vXXX.zip" (XXX: the version), right-click and select "extract all" in the Menu, select a destination to save the extracted file and click "Extract".

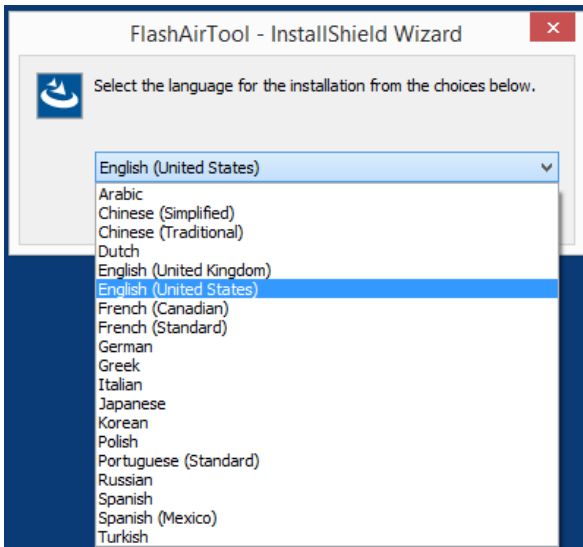
Double-click "FlashAir\_tool\_vXXX.exe" in the extracted file to install.

When the security alert is displayed, click "Execute". When the user account control alert is displayed, click "Yes".

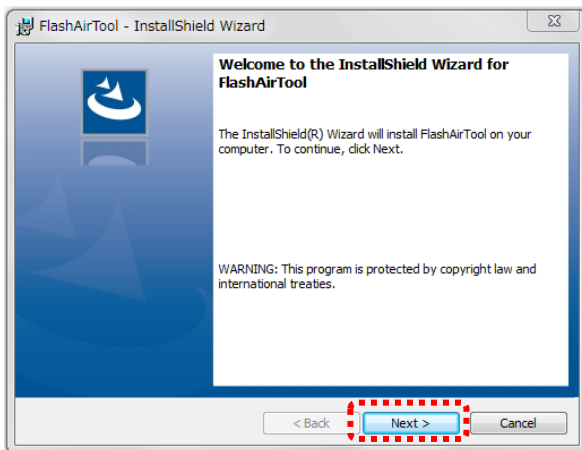
- You need Microsoft .NET Framework to use FlashAir Configuration Software. When Microsoft .NET Framework is not installed on your PC, the invitation to installation will be displayed. Please install it while connected to the internet. When your Windows version is not the latest, the installation may not be completed. In that case, please update the Windows and retry the installation.



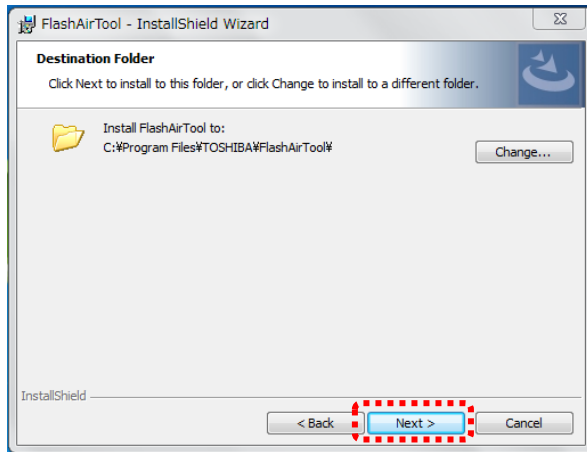
Select the language and click "OK".



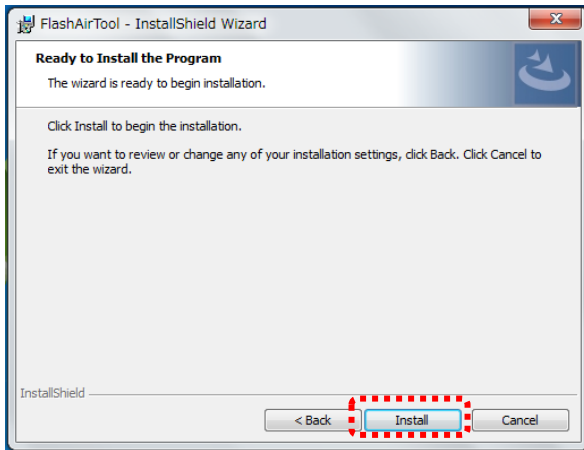
After installation is prepared, the below is displayed. Click "Next".



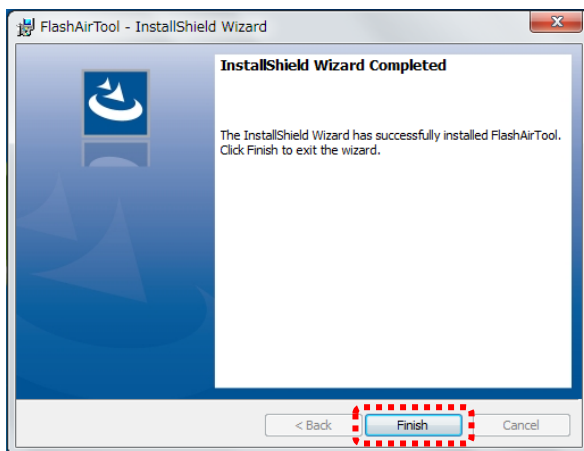
Select the folder to install the FlashAir Configuration Software and click "Next".  
Default folder: C:\Program Files\TOSHIBA\FlashAirTool. If you wish to save the file in another location, click "Change" to select the location. (Default is shown in this manual.)



When the below is displayed. Click "Install".



After installation is completed, the below is displayed. Click "Finish".



FlashAir Configuration Software installation is successfully completed. FlashAir Tool icon will appear on your computer desktop.



Insert your FlashAir into the SD card slot of your PC, then double-click the icon of "FlashAir Tool" to open it. Please see the help attached in the FlashAir Configuration Software for the usage.